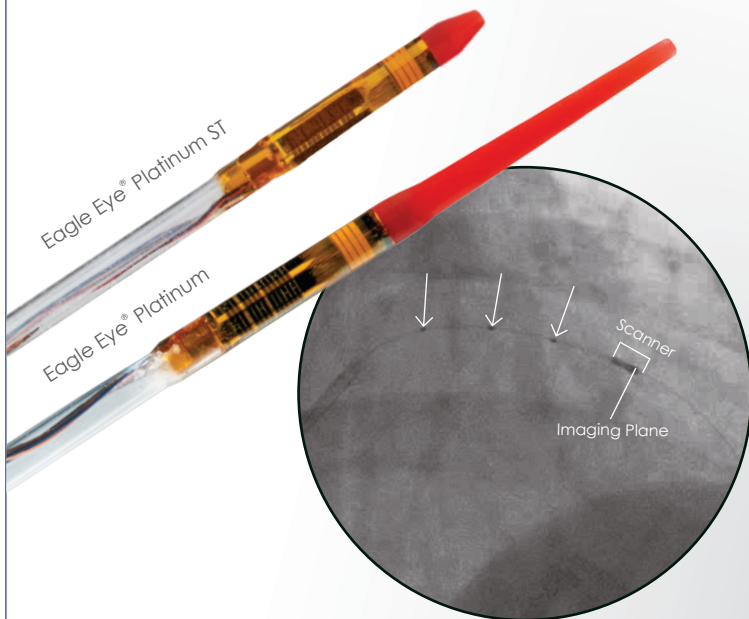


Eagle Eye® Platinum

RX Digital IVUS Catheters

The
#1 CHOICE OF PHYSICIANS
FOR INTRAVASCULAR
IMAGING¹



Fast, plug-and-play simplicity
only offered by Volcano

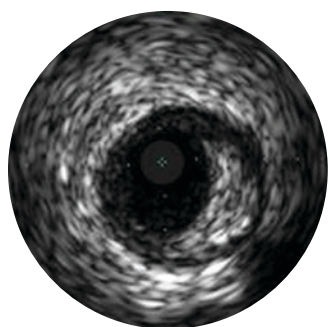
Designed for Exceptional Deliverability and Ease of Use

- ▶ Soft, tapered tip with lowest available entry profile² and choice of two lengths
- ▶ GlyDx® hydrophilic coating
- ▶ Long rapid exchange lumen for pushability
- ▶ Radial access appropriate; fits through all 5F guides³

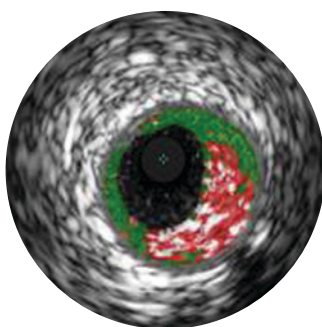
Radiopaque Markers for Quick, Convenient Length Estimation

- ▶ Three markers not offered by other IVUS catheters
- ▶ 10 mm spacing facilitates length estimation without a pullback device or marker wire

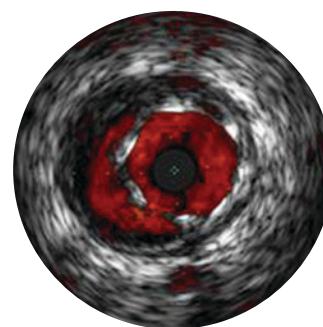
Three Imaging Modalities



Grayscale IVUS Imaging



VH® IVUS Imaging⁴



ChromaFlo® Imaging

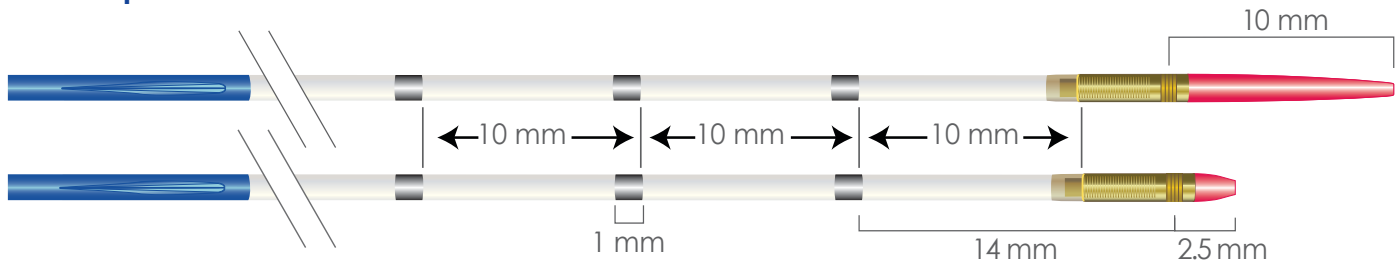
*Compatible with SyncVision™ Co-registration application
for easy correlation with the angiogram*

1. Millenium Research Group, US Marketrack internal sales data on file
2. 0.019" entry profile, data on file. Tip to transducer lengths offered include 2.5 mm and 10 mm.
3. Fits through guide catheters with inner diameters as low as 0.056". Data on file at Volcano Corporation.
4. Safety and effectiveness of system for use in the characterization of vascular lesions and tissue types has not been established.

Eagle Eye® Platinum

RX Digital IVUS Catheters

Distal Tip and RO Marker Detail

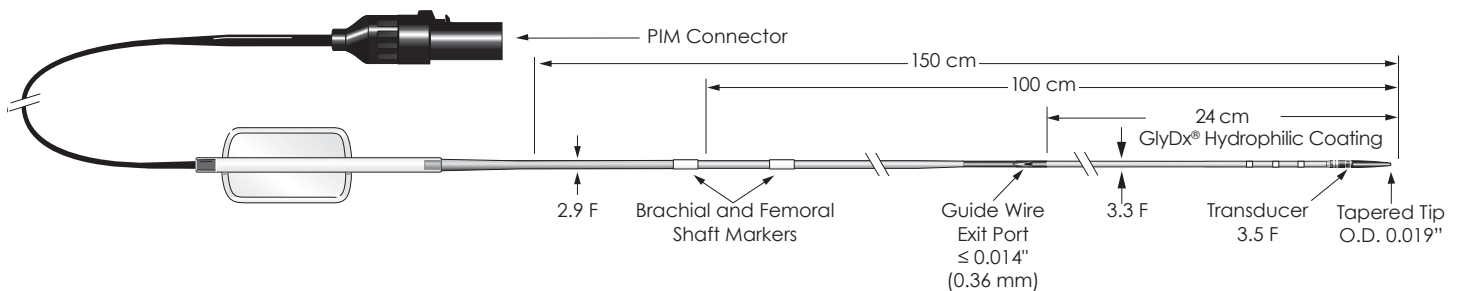


Eagle Eye® Platinum/Platinum ST

RX Digital IVUS Catheter

Ordering Information

85900P	Platinum
85900PST	Platinum ST



Technical Specifications

Minimum Guide Catheter	Maximum Guide Wire	Maximum Imaging Diameter	Working Length	Frequency
5F (I.D. ≥ .056")	0.014	20 mm	150 cm	20 MHz

CPT Codes – Non Coronary

+37250	IVUS of initial non-coronary vessel
+37251	IVUS of additional non-coronary vessels
+75945-26	Radiologic supervision, initial non-coronary vessel
+75946-26	Radiologic supervision, additional non-coronary vessels

CPT Codes – Coronary

+92978-26	IVUS of initial coronary vessel
+92979-26	IVUS of additional initial coronary vessel

C-Codes

C1753	Catheter Intravascular Ultrasound
-------	-----------------------------------



PRECISION GUIDED THERAPY

Volcano Corporation
 Corporate Headquarters
 3721 Valley Centre Drive, Suite 500
 San Diego, CA 92130 USA
 Phone: 800-228-4728
 Fax: 858-720-0325

Volcano Europe BVBA/SPRL
 EU Authorized Representative
 Excelsiorlaan 41
 B-1930 Zaventem Belgium
 Phone: +32 2 679 1076
 Fax: +32 2 679 1079

Volcano Japan
 Japan Headquarters
 Hamamatsucho Square 6F
 1-30-5, Hamamatsucho,
 Minato-ku, Tokyo 105-0013, Japan
 Phone: +81-3-6430-9400
 Fax: +81-3-6430-9401

For further information about Volcano and its products, please visit www.volcanocorp.com.
 Volcano and the Volcano logo, VH, GlyDx, ChromaFlo, and Eagle Eye are registered trademarks of Volcano Corporation.
 SyncVision is trademark of Volcano Corporation. Prescription Only. Consult Instructions for Use.

600649-001/005