



# Eagle Eye® Platinum ST

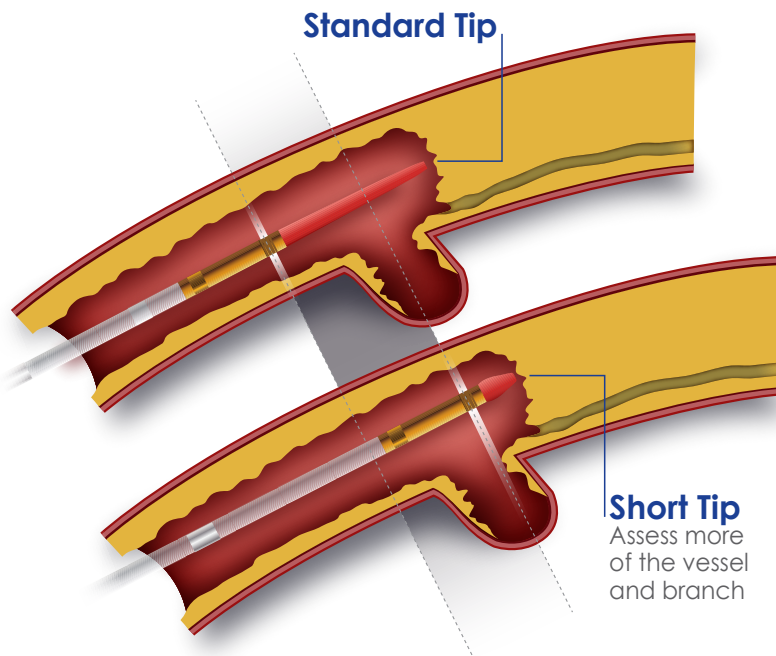
Short Tip RX Digital IVUS Catheter

## The New Choice for Complex Lesions



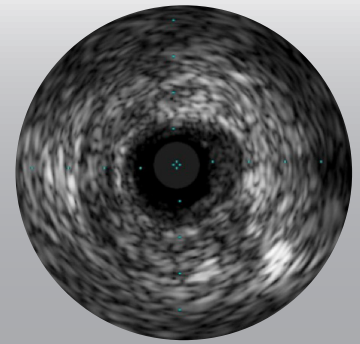
**Closer Visualization**  
to Highly Stenosed Lesions,  
Bifurcations and Distal Anatomy

**Improved Deliverability<sup>1</sup>**

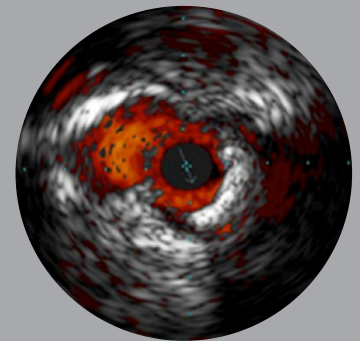


**2.5 mm tip-to-imaging distance, with all the other features of our top selling Eagle Eye® Platinum catheter:**

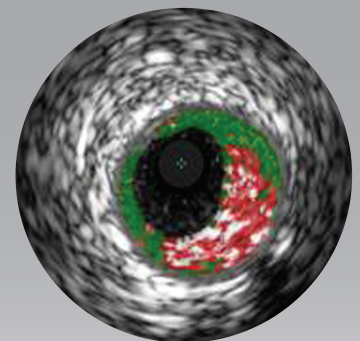
- ▶ Plug-and-Play Simplicity
- ▶ Radiopaque Markers
- ▶ GlyDx® Hydrophilic Coating
- ▶ Radial Access-Appropriate: Fits through all 5F Guides<sup>2</sup>
- ▶ Coronary and Peripheral indications



Grayscale IVUS Imaging  
Highly Stenosed Lesion



ChromaFlo® Imaging  
Bifurcation



VH® IVUS Imaging

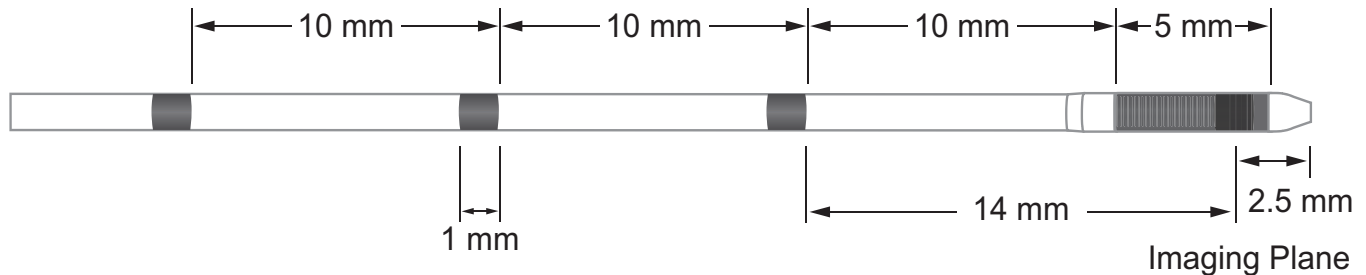
<sup>1</sup> Compared to the Eagle Eye Platinum catheter in a tortuous benchtop model. Data on file.  
<sup>2</sup> Fits through guide catheters with inner diameters as low as 0.056". Data on file.

All IVUS images: Data on file.

# Eagle Eye® Platinum ST RX Digital IVUS Catheter

## Technical Specifications

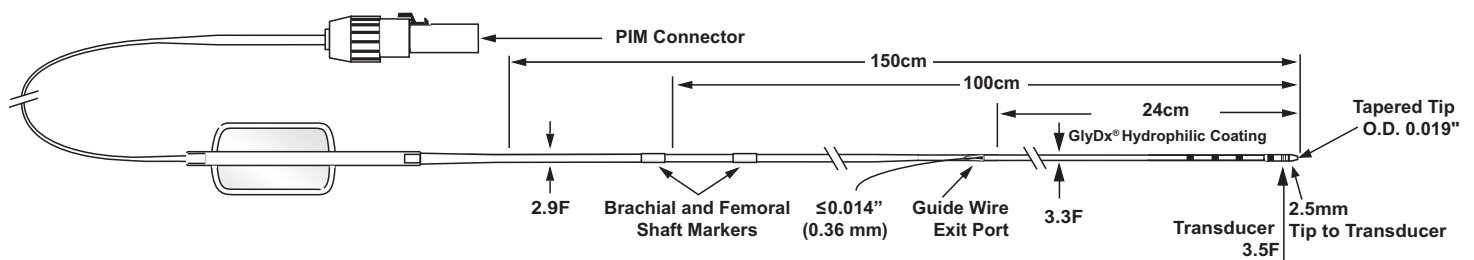
### Distal Tip and RO Marker Detail



## Eagle Eye® Platinum ST RX Digital IVUS Catheter

### Ordering Information

85900PST



Minimum Guide Catheter	Maximum Guide Wire	Maximum Imaging Diameter	Working Length	Frequency
5F (I.D. $\geq$ .056")	0.014	20 mm	150 cm	20 MHz

Compatible with the Volcano Trak Back® II and R-100 pullback devices.

### CPT Codes - Peripheral

37250	IVUS of initial non-coronary vessel
37251	IVUS of additional non-coronary vessels
75945-26	Radiologic supervision, initial non-coronary vessel
75946-26	Radiologic supervision, additional non-coronary vessels

### CPT Codes - Coronary

92978-26	IVUS of initial coronary vessel
92979-26	IVUS of additional initial coronary vessel

### C-Codes

C1753	Catheter Intravascular Ultrasound
-------	-----------------------------------



PRECISION GUIDED THERAPY

#### Volcano Corporation

Corporate Headquarters  
3661 Valley Centre Drive, Suite 200  
San Diego, CA 92130 USA  
Phone: 800-228-4728  
Fax: 858-720-0325

#### Volcano Corporation

Manufacturing Headquarters  
2870 Kilgore Road  
Rancho Cordova, CA 95670 USA  
Phone: 800-228-4728  
Fax: 916-638-8812

#### Volcano Europe SA/NV

Europe Headquarters  
Excelsiorlaan 41  
B-1930 Zaventem Belgium  
Phone: +32 2 679 1076  
Fax: +32 2 679 1079

For further information about Volcano and its products, please visit [www.volcanocorp.com](http://www.volcanocorp.com).  
Volcano and the Volcano Logo are registered trademarks of Volcano Corporation.

601-0503.07/002