

PrimeWire Prestige® PLUS

Pressure Guide Wire

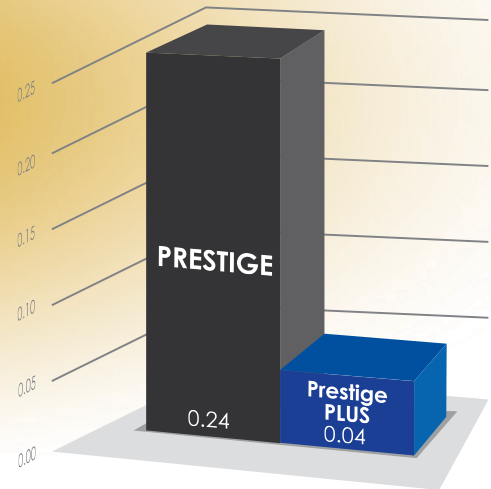
The Prestige PLUS Performance

Successful Navigation in Distal Anatomy and Bifurcations

GlyDx® hydrophilic coating combined with a familiar frontline tip, improved torque response and more support² make the Prestige PLUS guide wire an optimal choice for maneuvering in complex anatomy.

Wire Lubricity

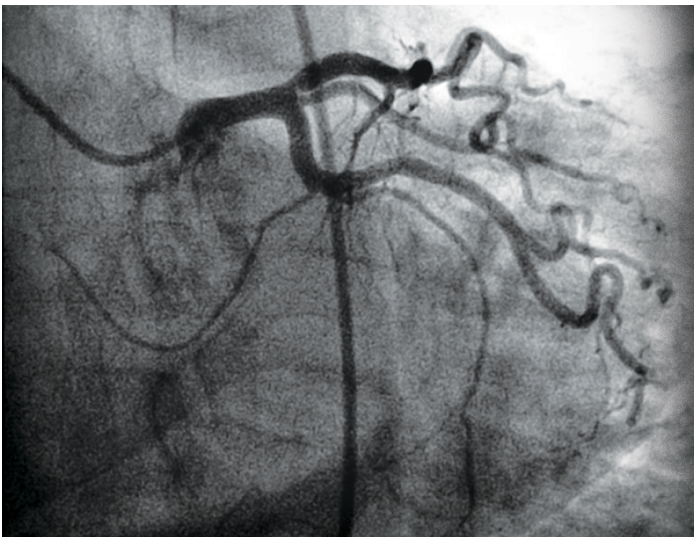
Porcine Aorta Frictional Test



Prestige PLUS is six times more lubricious than the Prestige® Pressure Guide Wire.¹

Smooth Device Delivery

Long-lasting GlyDx hydrophilic coating maintains its lubricity through the entire case,³ making Prestige PLUS ideal for delivering devices.



Prestige PLUS is designed to reach tortuous anatomy.

Functional Lesion Assessment

Volcano's FFR guidance moves beyond angiography alone for more informed therapeutic decisions. With reliable pressure measurement and intuitive workflow, functional assessment has never been so simple.



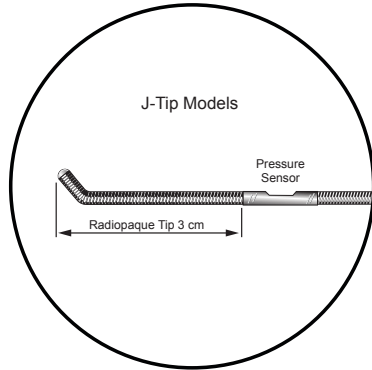
Volcano's FFR Case Manager™ software delivers intuitive workflow.

1. Prestige PLUS is more lubricious than PRESTIGE, data on file at Volcano Corporation.
2. Compared to the PrimeWire® pressure guide wire, data on file at Volcano Corporation.
3. Prestige PLUS lubricity remained unchanged after one hour, data on file at Volcano Corporation.

PrimeWire Prestige® PLUS

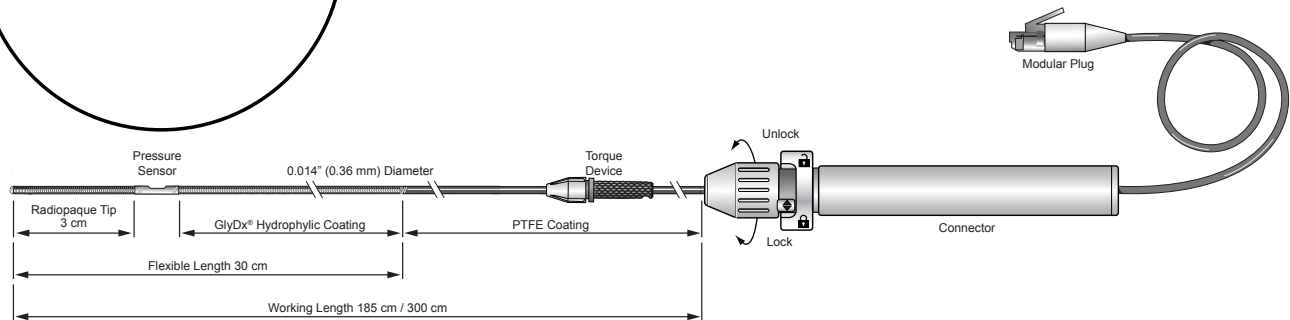
Pressure Guide Wire

Technical Specifications



PrimeWire Prestige® PLUS

Guide Wire



Order Information

Model	Description	Length	Tip
9185	PrimeWire Prestige® PLUS Pressure Guide Wire	185 cm	Straight
9185J	PrimeWire Prestige® PLUS Pressure Guide Wire	185 cm	J-tip
9300	PrimeWire Prestige® PLUS Pressure Guide Wire	300 cm	Straight
9300J	PrimeWire Prestige® PLUS Pressure Guide Wire	300 cm	J-tip

CPT Codes¹

93571-26	FFR and/or CFR of initial coronary vessel
93572-26	FFR and/or CFR of additional coronary vessels

C-Codes²

C1769	Guide Wire
-------	------------

1. Current Procedural Terminology (CPT) © 2009 American Medical Association. All Rights Reserved.

2. C-Codes are HCPCS device category codes that are reportable under the Medicare Outpatient Prospective Payment System.



PRECISION GUIDED THERAPY

Volcano Corporation

Corporate Headquarters
3721 Valley Centre Drive, Suite 500
San Diego, CA 92130 USA
Phone: 800-228-4728
Fax: 858-720-0325

Volcano Europe BVBA/SPRL

EU Authorized Representative
Excelsiorlaan 41
B-1930 Zaventem Belgium
Phone: +32 2 679 1076
Fax: +32 2 679 1079

Volcano Japan

Japan Headquarters
Japan Headquarters
Hamamatsucho Square 6F
1-30-5, Hamamatsucho,
Minato-ku, Tokyo 105-0013, Japan
Phone: +81-3-6430-9400
Fax: +81-3-6430-9401

For further information about Volcano and its products, please visit www.volcanocorp.com.

Volcano, the Volcano logo, PrimeWire, Prestige, and GlyDx are registered trademarks of Volcano Corporation.

601-0500.16/004